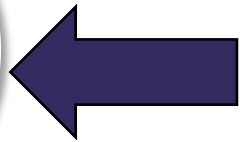
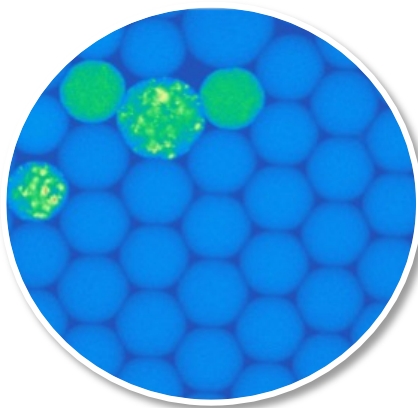


BIOTECH IN DROPLETS, FOR EVERY LAB!



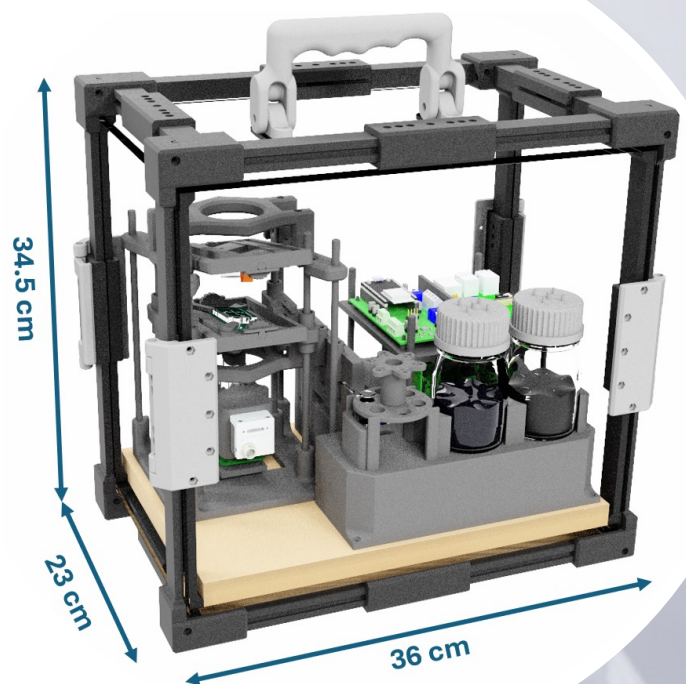
Strain engineering of yeast in biomanufacturing currently automated with pipetting robots and plate assays

- ☹️ Throughput limited to 1-2k samples
- ☹️ ~\$0.1-0.5/sample
- ☹️ No inline integration

Use the Force droplets, Luke!

Enter CogniFlow®:

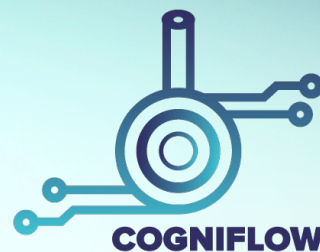
- 😊 10x less power
- 😊 Unlimited samples
- 😊 3-5x less instrument cost, 10-100x less reagent cost
- 😊 3-6x faster than pipetting
- 😊 Inline automation



Please turn page...

About CogniFlow®

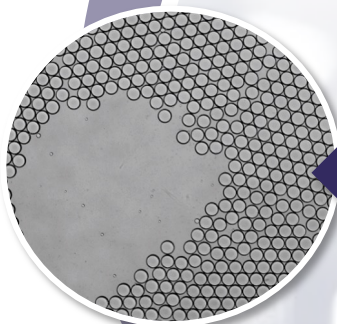
CogniFlow is a TalTech **deep tech spin-off** in the process of foundation. Our young team aims to bring down the entry barrier to **biotech automation** by providing **affordable, modular instrumentation** and **services** to implement & test **droplet automation** of your **biotech workflows**!



BIOTECH IN DROPLETS, FOR EVERY LAB!

1. Encapsulate!

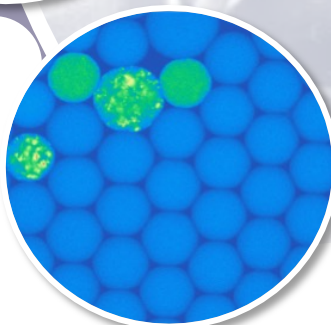
Each **droplet** is like a tiny **test tube**. **Yeast** + **reagents**.



Upstream processes

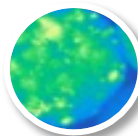
2. Incubate!

Incubate droplets overnight to **grow colonies**. Colonies emit **fluorescence**.



3. Sort!

Sort out droplets with **highest fluorescent intensity**. These have the most productive cells.



Downstream
proc.



Excitation

Pump

Sorting

Compute

Sensing

µf. chip

Software

Fluidics

Power

Customize!

CogniFlow® is a **modular** platform that can be configured to **your workflow**



CogniFlow OÜ
Ehitajate tee 5, Tallinn, Estonia, 19086
Reg: (under registration)

Email: info@cogniflow.eu
Phone: -
Website: www.cogniflow.eu